



Designed to make a difference



Exclusive to Blazes  
• FREE • FREE • WORTH £750  
**10 YEARS PARTS & LABOUR WARRANTY**  
on Premium Dimplex gas boiler



**GLEN DIMPLEX  
BOILERS**

\*10 Year Parts and Labour Warranty exclusive to Blazes

## DIMPLEX COMBI BOILER



ANTI-PLUME  
FLUE KIT  
OPTIONS

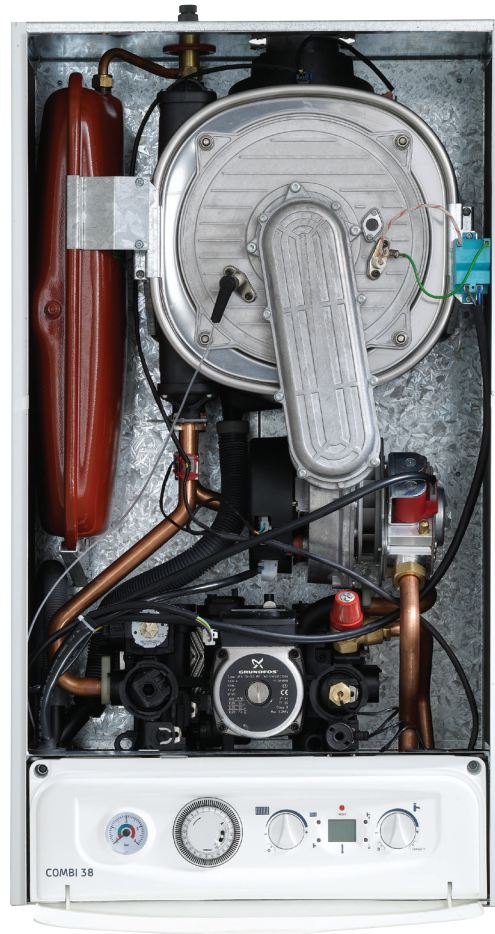
SEDBUK  
**A**

10  
YEAR  
Warranty

The Dimplex Combination boiler is a compact central heating solution which is ideally suited to homes that require hot water on demand but don't want header or storage tanks with the added benefit of all-round energy efficiency.

- Choice of 3 Outputs
- 24kW, 30kW and 38kW Options available
- Excellent DHW Flow rates
  - 24kW 9.8L, 30kW 12.3L, 38kW 15.6L
- Wide CH modulation range
  - 24kW 6.0kW up to 18.0kW
  - 30kW 7.4kW up to 23.3kW
  - 38kW 9.8kW up to 30.0kW
- Low Nox emissions (Nox Class 5)

- All components accessible from front
- Giannoni iso-thermic, stainless steel heat exchanger
- Ultra low nox burner
- Grundfos hydrobloc, pump and controls
- Gas/air control and pre-mix fan
- Well proven, reliable PCB
- Twin LCD giving clear information for User and Service Engineer on boiler status



- Only 2 screws to access
- Telescopic flue can be fitted horizontally
- Wall mounting template
- Quick fit guide
- Pre plumbing jig
- Captive washers
- Filling loop included
- Frost protection
- Whisper quiet operation

## DIMPLEX SYSTEM BOILER



ANTI-PLUME  
FLUE KIT  
OPTIONS

SEDBUK  
**A**

10  
YEAR  
Warranty

The Dimplex System boiler provides all the benefits of a sealed central heating system, which means high performance and efficiency but is also superbly designed for those that want a premium design and removes the need for a loft header tank.

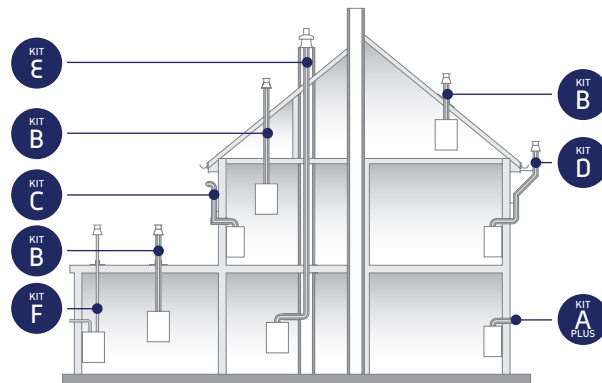
- Choice of two outputs
- 18kW and 30kW outputs available
- Compact Dimensions 800x446x335
- Wide CH modulation range
  - 18kW - 5.8kW up to 18.0kW
  - 30kW - 8.1kW up to 29.8kW
- Low Nox emissions (Nox Class 5)

- All components accessible from front
- Giannoni iso-thermic, stainless steel heat exchanger
- Ultra low nox burner
- Grundfos hydrobloc, pump and controls
- Gas/air control and pre-mix fan
- Well proven, reliable PCB
- Twin LCD giving clear information for User and Service Engineer on boiler status

## CONDENSING FLUE OPTIONS

DIMPLEX CONDENSING BOILERS CAN BE INSTALLED IN A WIDE RANGE OF DOMESTIC APPLICATIONS. IN ADDITION TO THE COMMON HORIZONTAL AND VERTICAL FLUE SYSTEMS FAMILIAR TO MOST, WE HAVE ALSO DEVELOPED A RANGE OF FLUE SYSTEMS DESIGNED TO OVERCOME THE POSSIBLE NUISANCE CAUSED BY FLUE PLUMBING. THESE KITS ARE DETAILED BELOW.

Suitable for high efficiency condensing appliances only.



KIT  
**A**  
PLUS

**TELESCOPIC HORIZONTAL FLUE 956120**  
93° flanged elbow, 430mm to 615mm telescopic terminal assembly, wall seals (Replaces 956083)



**PLUME DIVERTER KIT 956103**  
For use with Kit A Plus only

KIT  
**B**

**STANDARD VERTICAL FLUE 956081**  
Vertical turret socket, vertical flue terminal, bracket (no extension ducts included)

KIT  
**C**

**RAISED EXTERNAL FLUE OUTLET 956084**  
93° flanged elbow, 100mm concentric duct, wall seals, 80mm vertical extension (1000mm), bracket, terminal elbow

KIT  
**D**

**EXTERNAL VERTICAL FLUE 956085**  
93° flanged elbow, 100mm concentric duct, wall seals, 93° in line elbow, 1000mm extension duct, support brackets, 2 x 45° elbows and connecting duct, vertical flue terminal

KIT  
**E**

**CHIMNEY FLUE LINER 956082**  
93° flanged elbow, vertical turret socket, flue duct, wall access plate, 93° elbow and metal support bracket, chimney centralising bracket (for flexi tube), chimney top connector, terminal

Flexi tube available in lengths of:  
10m 956110, 20m 956111, 30m 956112  
Maximum flue length 30m

KIT  
**F**

**SPLIT PIPE VERTICAL FLUE OUTLET 956080**  
Twin 80mm adaptor, 2 x extension ducts, roof terminal, pitch roof flashing, air intake and wall seals

## DIMPLEX OPEN VENT BOILER



ANTI-PLUME  
FLUE KIT  
OPTIONS

SEDBUK  
**A**

10  
YEAR  
Warranty

This boiler is no ordinary replacement for the traditional cast iron, wall hung or floor standing boilers. With an efficient and contemporary design, homeowners can reap the benefits of environmentally friendly boiler technology with the minimum disruption to the existing heating system.

- 18kW and 32kW options available
- Compact design 18kW will fit into standard kitchen cupboard
  - 18kW 585x376x275 • 32kW 585x376x344
- Lightweight
  - 18kW = 23kg • 32kW = 26kg lift weight
- Wide CH modulation range
  - 18kW - 6.0kW up to 18.1kW
  - 32kW - 9.6kW up to 30.7kW
- Low Nox emissions (Nox Class 5)

Glen Dimplex Boilers, Stoney Lane, Prescott, Merseyside L35 2XW  
Email: [info@glendimplexboilers.com](mailto:info@glendimplexboilers.com)  
[www.glendimplexboilers.com](http://www.glendimplexboilers.com)

For all Glen Dimplex Boilers telephone enquiries call 0844 371 1111

\*10 Year Parts and Labour Warranty exclusive to Blazes